



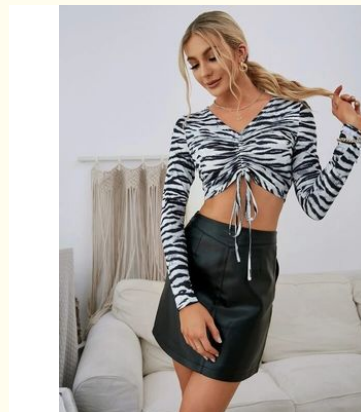
All Matching Decal T Shirt V Neck Drawstring Short Women Zebra Print Long Sleeve Shirt

Our Product Introduction

for more products please visit us on stylishladydress.com

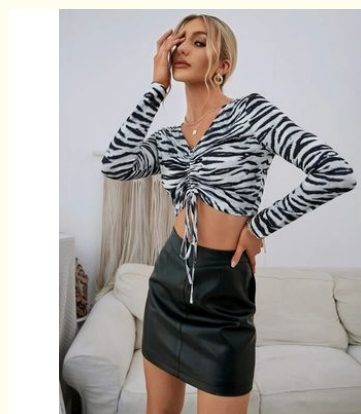
Basic Information

- Place of Origin: china
- Model Number: 7001
- Minimum Order Quantity: expand on
- Price: expand on



Product Specification

- Pattern: Zebra-stripe
- Occasion: Daily Wear
- Fit Type: Regular
- Gender: Woman
- Material: Polyester Fiber terylene
- Sleeve: Long Sleeve
- Season: Spring/Summer
- Size: S,M,L,XL
- Fashion Element: Lacing
- Pattern Cutting For Designers: Trim Fit
- Highlight: **All Matching Decal T Shirt, Decal T Shirt V Neck Drawstring, Women Zebra Print Long Sleeve Shirt**



More Images



Product Description

Fashion personality zebra print V-neck drawstring short all-matching base T-shirt

Technical Parameters:

Property	Value
Pattern	Plain
Sleeve	Short Sleeve, Long Sleeve
Gender	Woman
Printing	Digital Printing
Age Group	Adults
Occasion	Daily Wear
Product	Decal T Shirt
Season	Spring/Summer
Material	Polyester Fiber, Terylene
Collar	V Neck

Product Description:

Decal T Shirt is a perfect choice for adults in the Spring/Summer season for daily wear. Our t-shirts are designed with the latest printing techniques and made with the highest quality materials. All of our Decal T Shirt designs are made with durable, waterproof and fade-resistant inks, making them perfect for wearing outdoors or in any activity. Our decals are perfect for t-shirt printing, allowing you to customize your look with unique designs and colors that will last and stand out. We offer t-shirt decals printing with a variety of color options and styles to choose from, giving you the freedom to create the look that you desire.



Features:

Product Name: Decal T Shirt
Size: S, M, L, XL
Printing: Digital Printing
Material: Polyester Fiber, terelyne
Age Group: Adults
Pattern: Plain

Applications:

Decal T Shirt - Ideas for Women Dress Party Wear

Decal T Shirt is a perfect combination of modern styling and classic pattern. It is made of durable cotton material and can be used for heat transfer decal printing or t shirt printing. It is available in short sleeve and long sleeve style. The size ranges from S to XL, suitable for adults. Place of origin is China.

Decal T Shirt is perfect for women dress party wear. Its vivid printed pattern features a modern look that can make you stand out from the crowd. With its short and long sleeve design, you can choose according to your preference. It is also comfortable to wear for a long time. The durable cotton material makes it easy to wash and maintain.

Decal T Shirt is a perfect choice for women who want to look stylish and attractive. It is suitable for all kinds of occasions such as a party, wedding or even a casual outing. With its unique patterns and bright colors, it is sure to make you look fashionable and elegant. Don't miss this chance to get your own Decal T Shirt now!

Customization:

Our Decal T Shirt is stylish and perfect for any occasion. It is made in China and features digital printing for a modern look. It comes in a variety of colors and styles, so you can customize it to your liking. Choose from short sleeve or long sleeve, and create a look you love.

FAQ:

Q: What is a Decal T Shirt?

A: A Decal T Shirt is a T-shirt with a printed design that is created with a special heat transfer technique. It is made in China.

Q: What sizes of Decal T Shirt are available?

A: Decal T Shirts are available in a variety of sizes, ranging from small to extra-large.

Q: What material is used for Decal T Shirt?

A: Decal T Shirts are usually made from cotton or polyester fabric.

Q: How long does it take to make a Decal T Shirt?

A: It usually takes around 2-3 days to make a Decal T Shirt.

Q: Where is the Decal T Shirt made?

A: The Decal T Shirt is made in China.

VINAS DRESS Guangzhou Vinas clothing technology Co., LTD



15827133024



leopeng15827133024@gmail.com



stylishladydress.com

Building F, No. 3 Nanpu Nangui Road, Luopu Street, Panyu District, Guangzhou City